



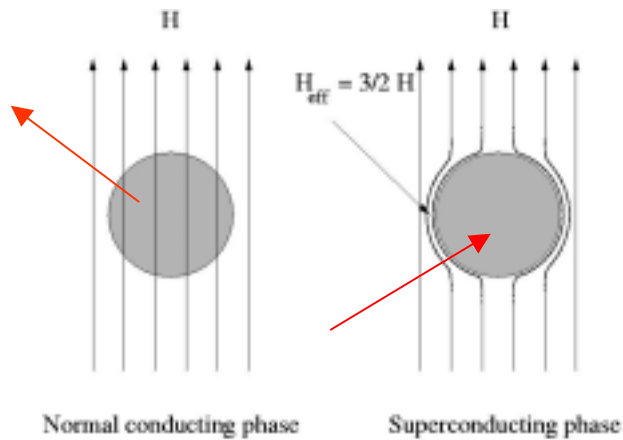
# Results from the ORPHEUS dark matter detector

K. Borer, G. Czapek, F. Hasenbalg, M. Hauser,  
S. Janos, P. Loaiza, U. Moser, K. Pretzl,  
C. Schütz, P. Wicht and S. Wüthrich.

University of Bern, Switzerland

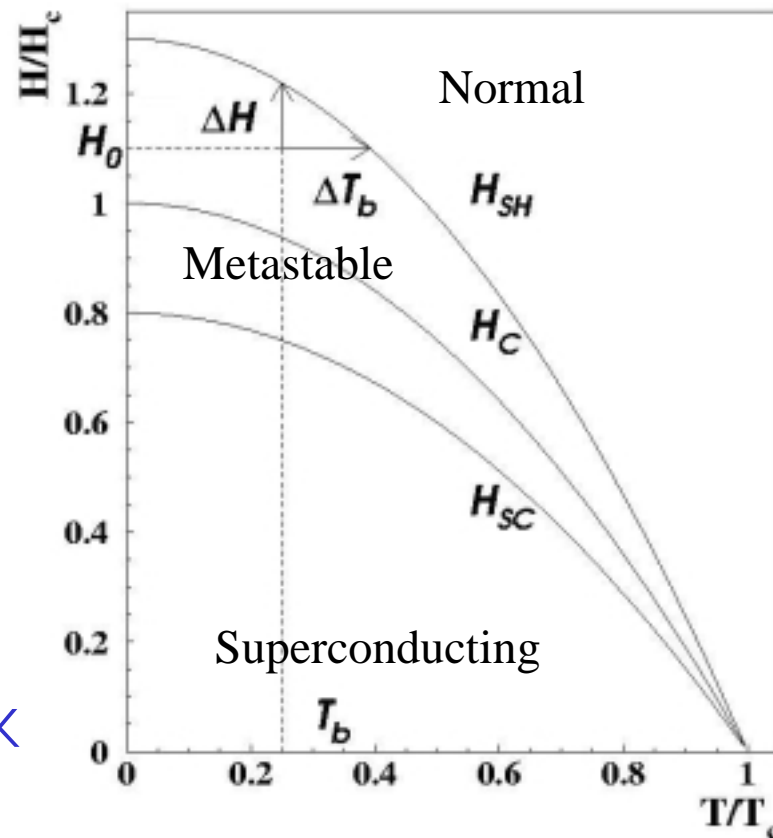
*LTD10, Genoa 2003*

# A superconducting Sn granule detector



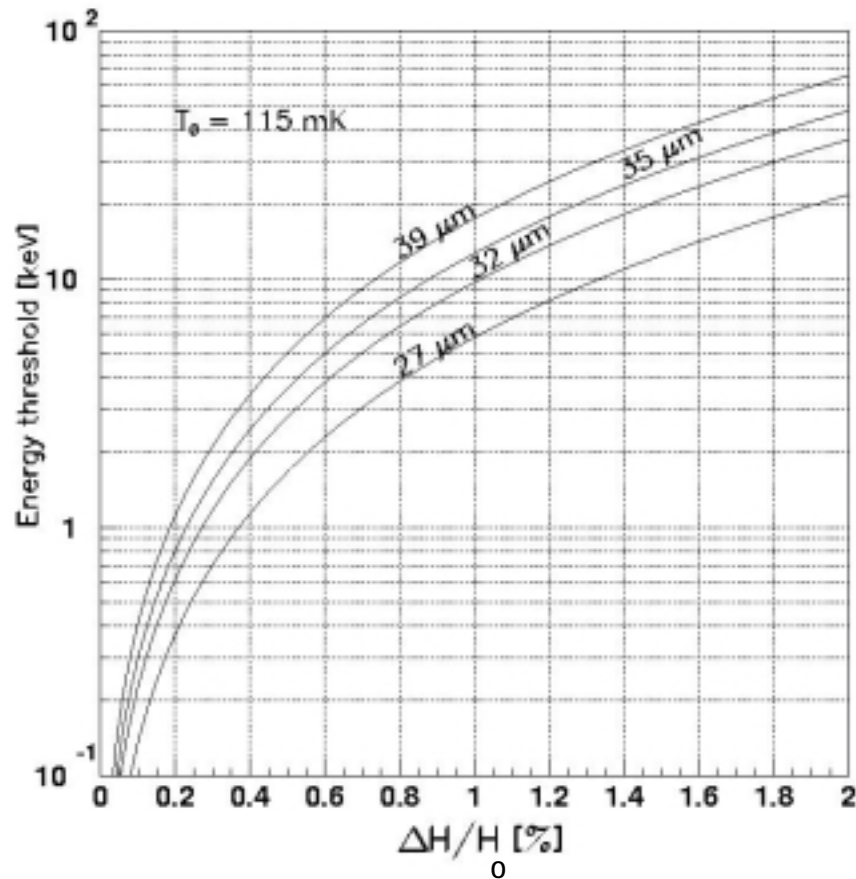
An energy deposition of 1 keV produces a temperature increase of 100 mK .  
 (bath temp. = 110 mK,  
 gran. diam= 35  $\mu\text{m}$ )

$$T_c = 3.72 \text{ K}$$

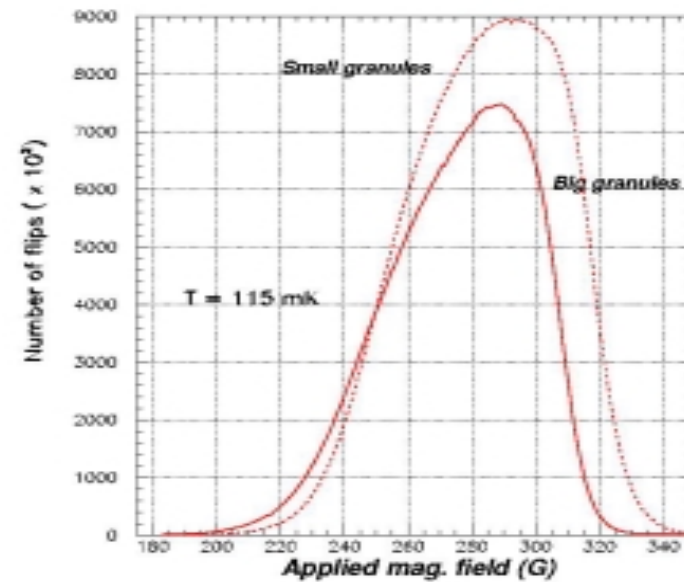


Results from the ORPHEUS dark matter detector

# Energy threshold



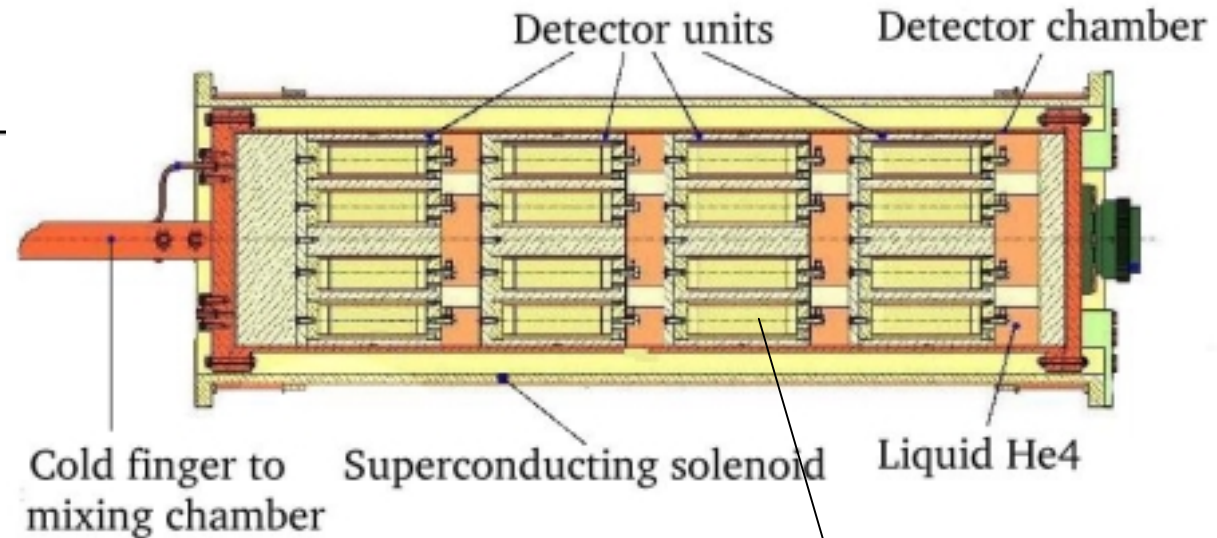
Superheating field distribution:



Results from the ORPHEUS dark matter detector

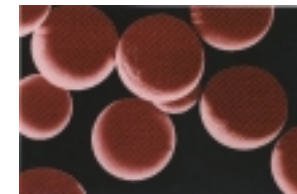
# The experiment

56 pick-up coils: half with granules with 24-32  $\mu\text{m}$  diameter and half with 34-39  $\mu\text{m}$



Total mass=450 g

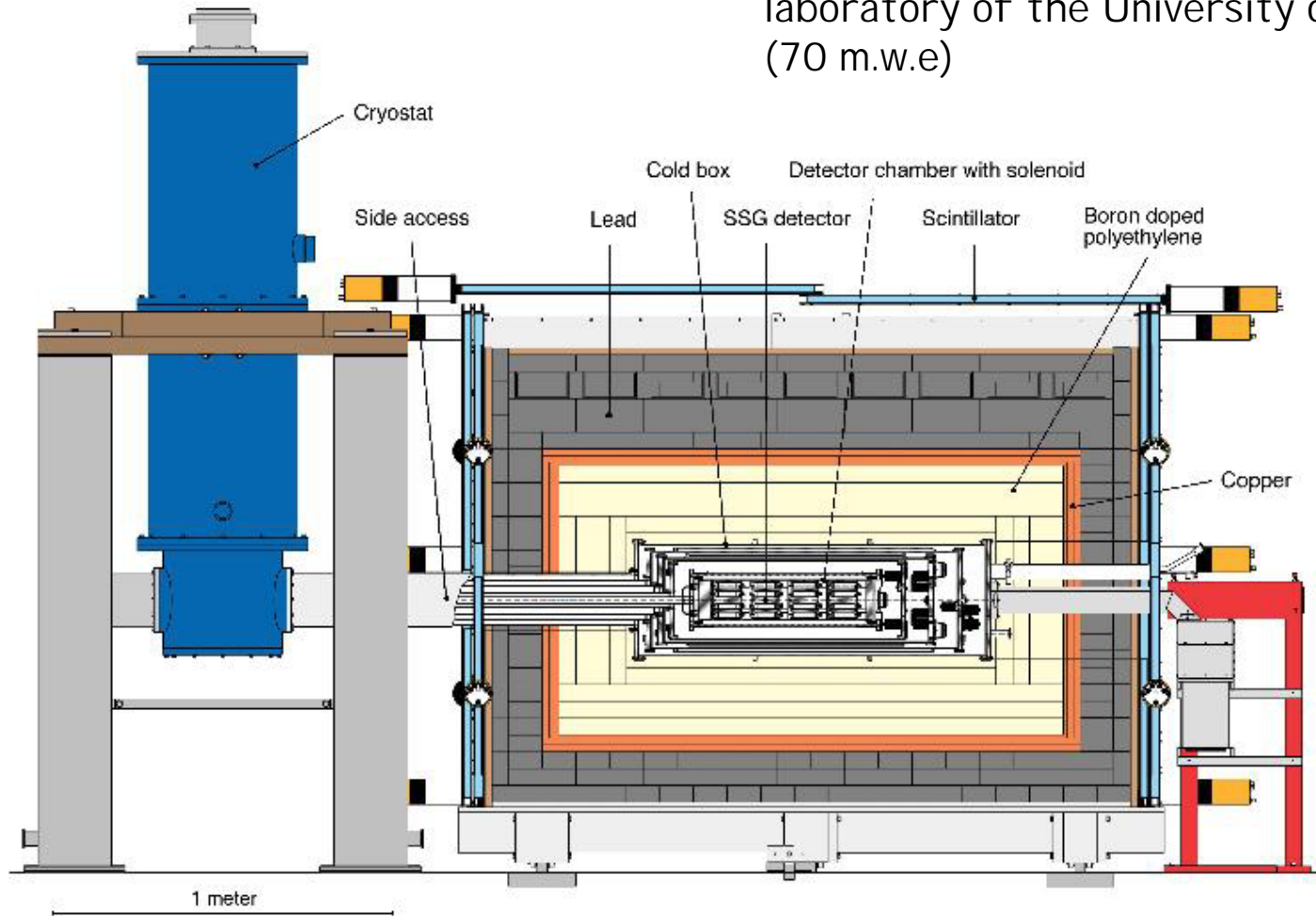
Inside each coil, there is a mixture of Tin with dielectric Teflon (with a volume filling factor of 10 % of Tin).



Results from the ORPHEUS dark matter detector

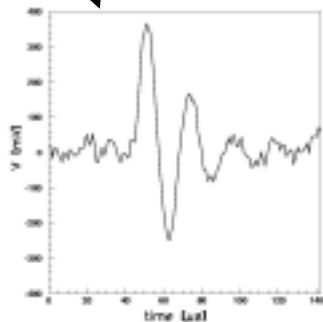
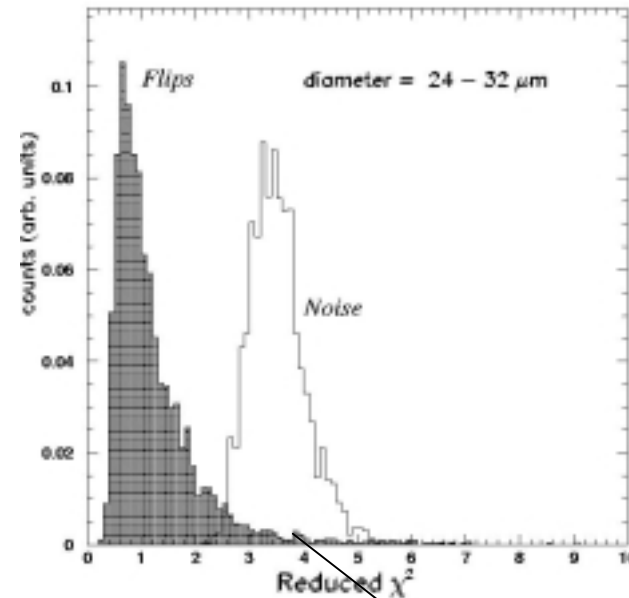
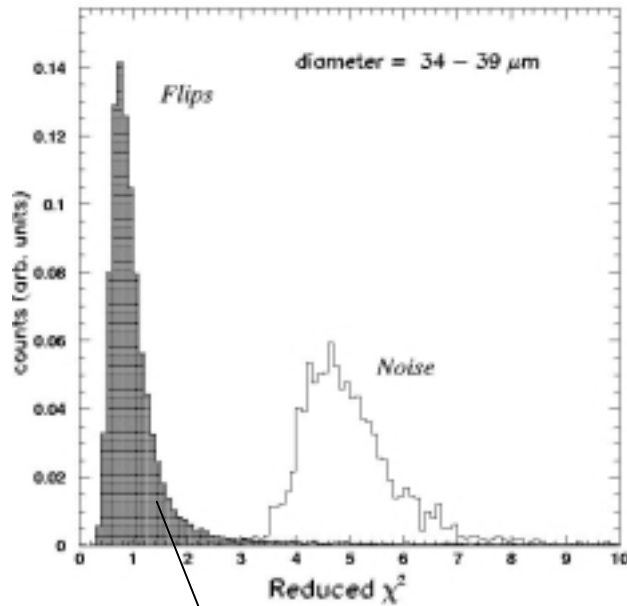
# Experimental setup

ORPHEUS is located in the underground laboratory of the University of Bern (70 m.w.e)

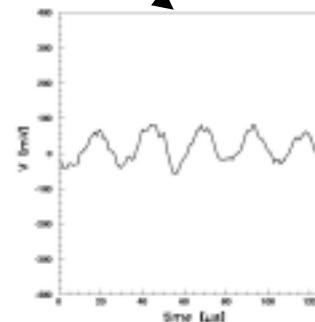


Results from the ORPHEUS dark matter detector

# Electronic noise discrimination



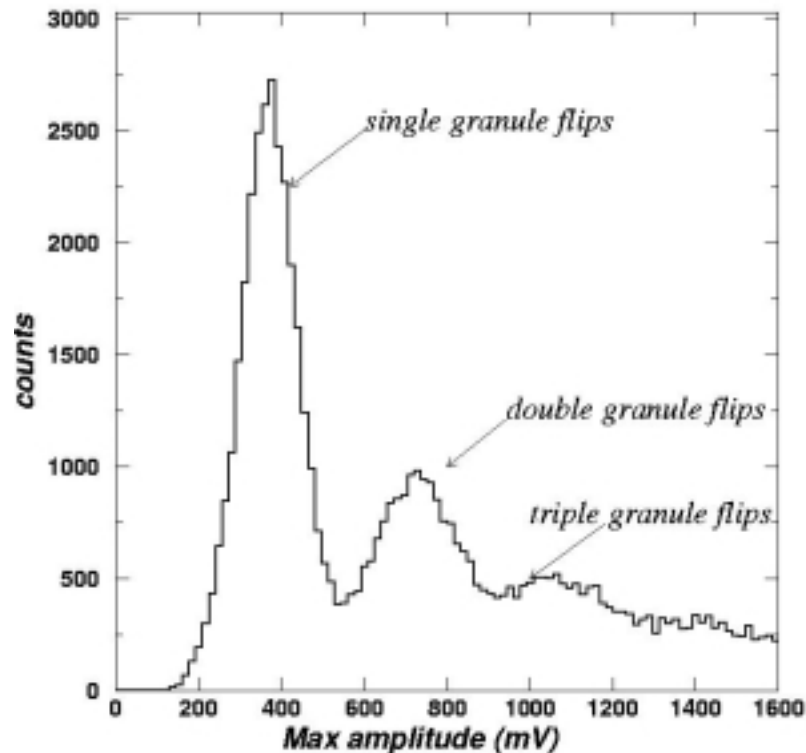
Pulse-shape  
discrimination



Results from the ORPHEUS dark  
matter detector

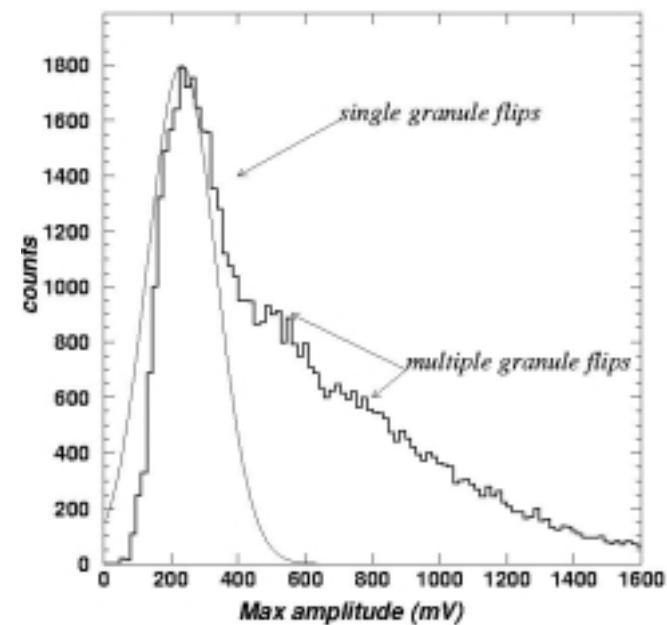
# Amplitude distributions

## Big granules



The amplitude of the pulses allows to distinguish the single granule flip.

## Small granules

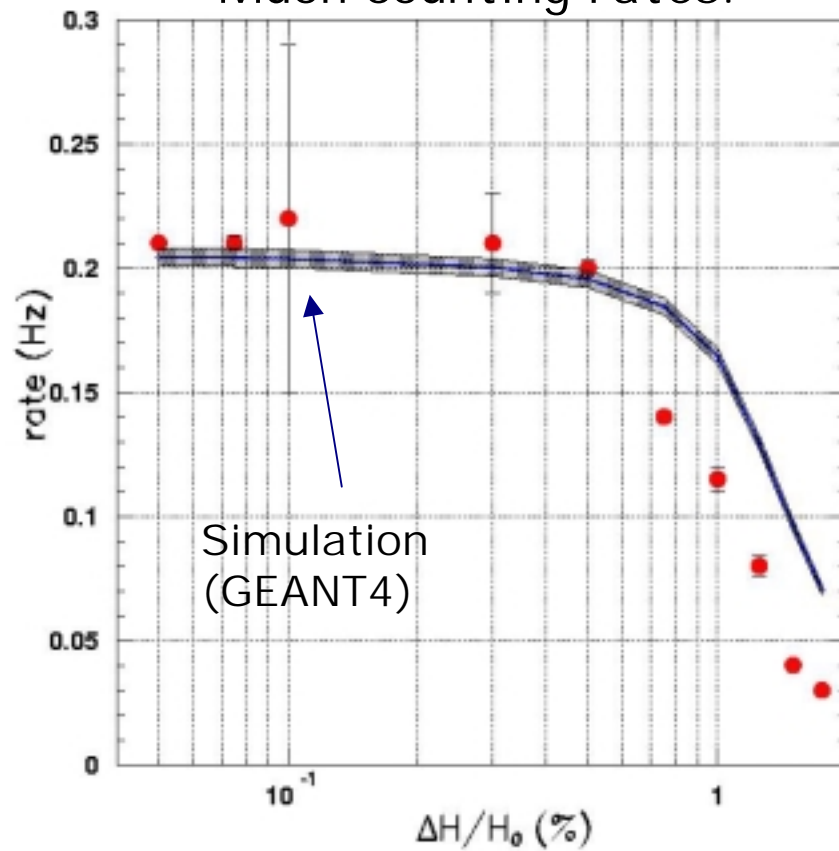


Results from the ORPHEUS dark matter detector

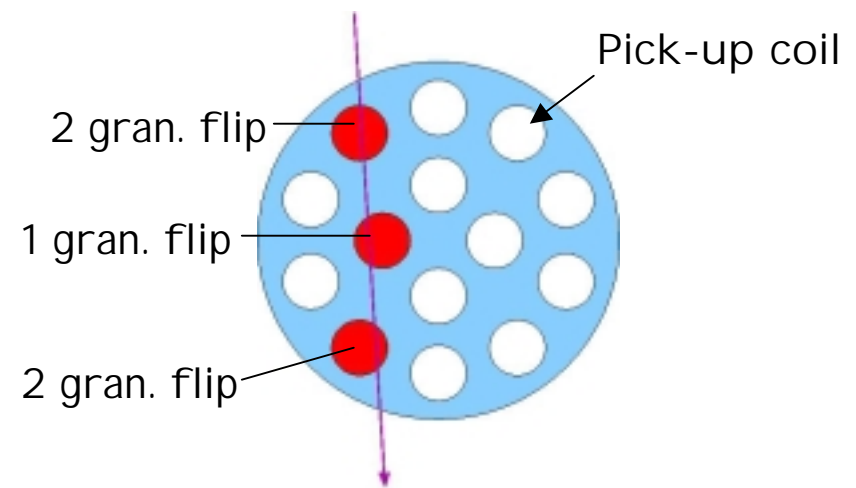


# Muons

Muon counting rates:



Front view of one module



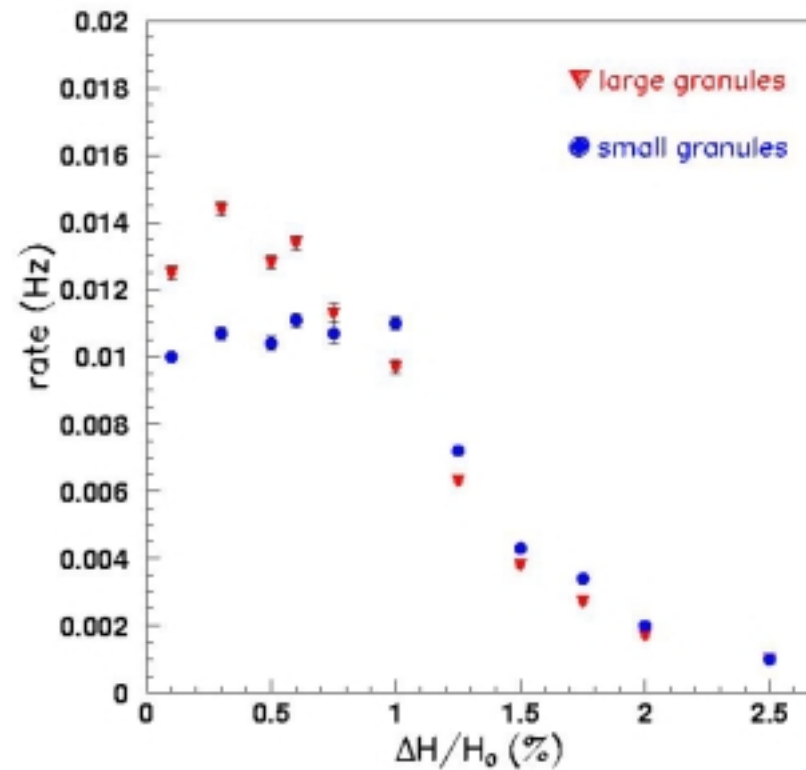
A muon event

Results from the ORPHEUS dark matter detector



# Single rates

The small granules have better discrimination power than the big granules



Results from the ORPHEUS dark matter detector



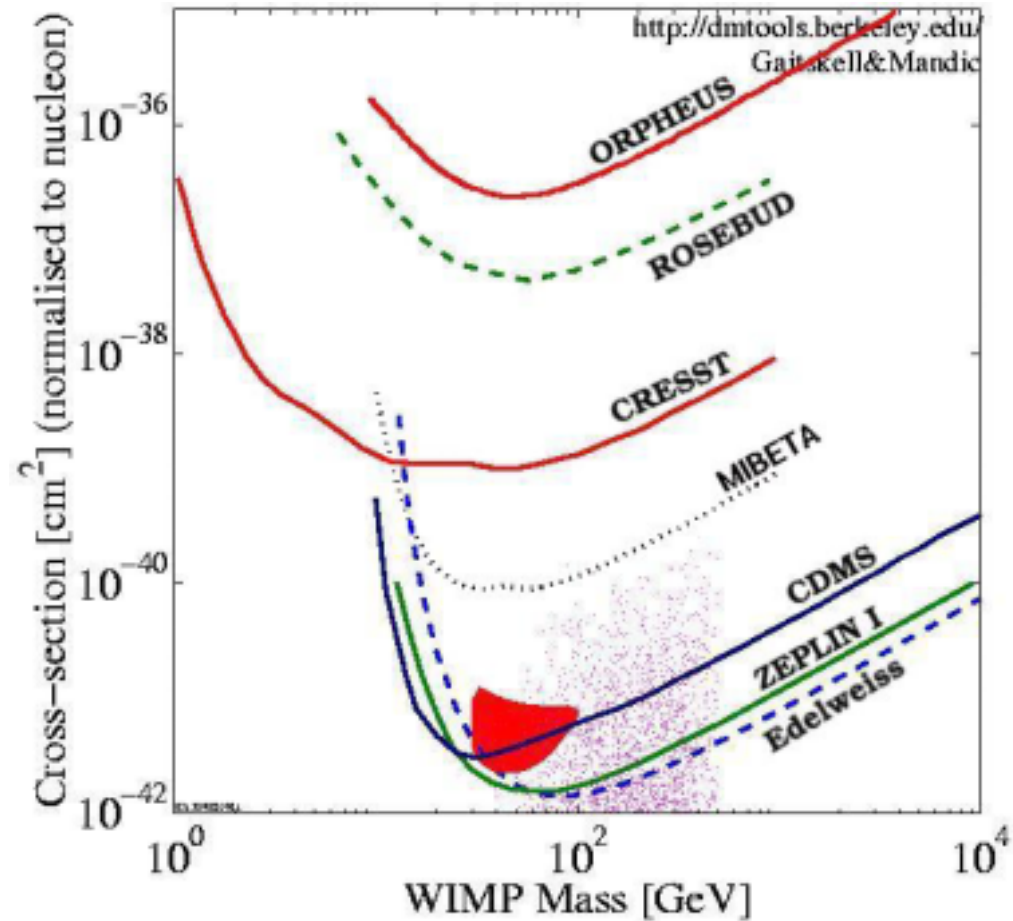
# Preliminary results

$$\rho_{\text{halo}} = 0.3 \text{ GeV cm}^{-3}$$

$$V_E = 243.5 \text{ km s}^{-1}$$

$$V_{\text{esc}} = 570 \text{ km s}^{-1}$$

$$\sigma_v = 270 \text{ km s}^{-1}$$



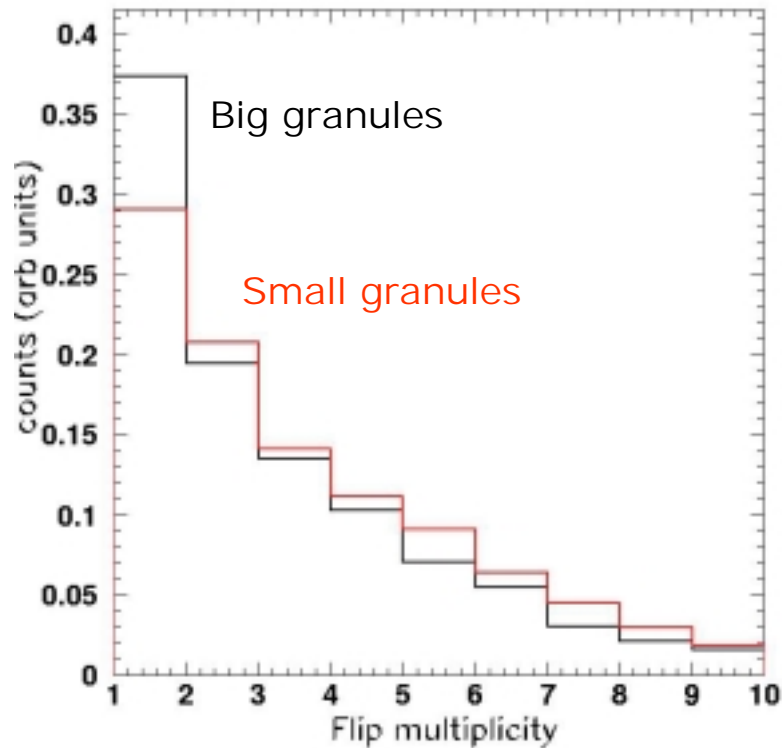
Results from the ORPHEUS dark matter detector



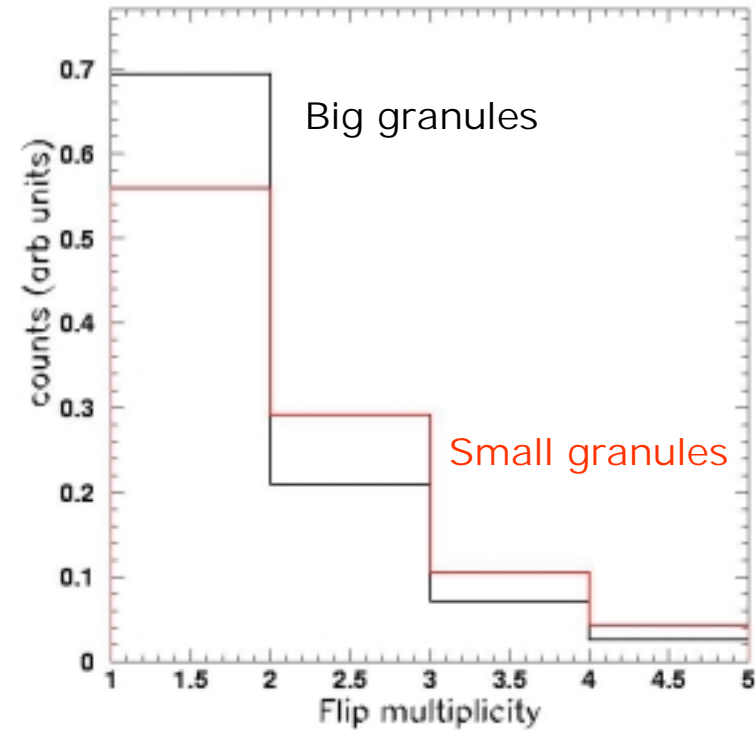
# Flip multiplicity in the detector

The small granules have more discrimination power than the big ones.

Data at  $\Delta H/H=0.075\%$



With  $^{57}\text{Co}$  source:



Results from the ORPHEUS dark matter detector